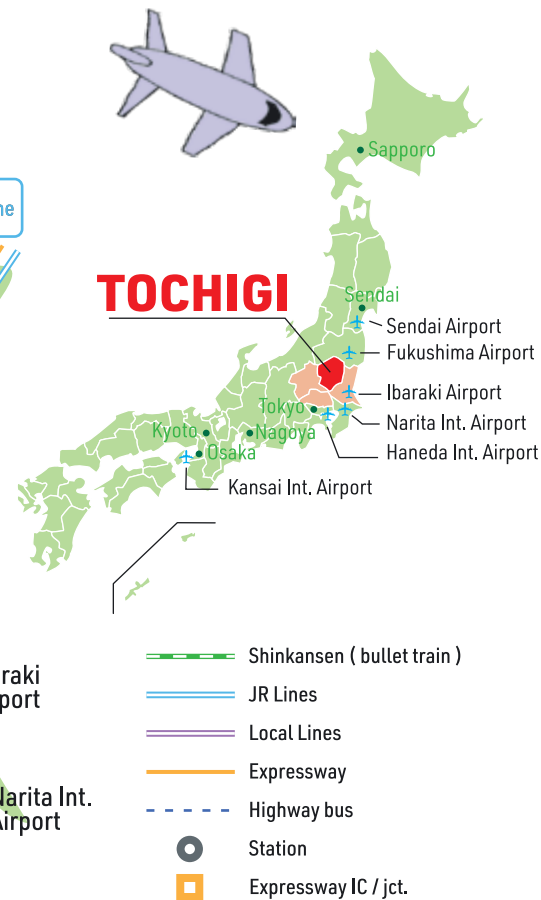
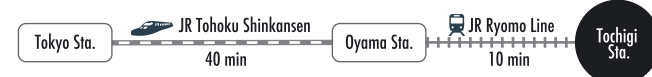
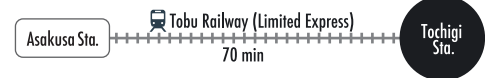




 By train (from Tokyo)



Step back into Edo period Japan



HOW TO GET AROUND?

Most attractions in the city center are a short walk from Tochigi station. However, if you want to go further, you can hire a bike or take a taxi from the station. There are also local buses that will take you outside the city center towards Mt. Ohira.



WHAT SHOULD I DO?

Why not rent a Kimono and experience some traditional activities after taking a short boat ride up and down the river? If you like art, Tochigi city was home to a famous Ukiyo-e artist called Utamaro, so the museums have regular Ukiyo-e exhibitions. Tochigi city also has some fantastic festivals, so make sure to check those out as well!

WHEN IS BEST TO GO?

You can enjoy Tochigi city's activities and museums all year round. If you want to see the beautiful cherry blossoms between late March and late April, the gorgeous hydrangeas from mid-June to early July, or the pretty autumn leaves, try to visit Mt. Ohira (20 min by car). Grape picking in August is also popular near the mountain. Autumn is also when the famous Tochigi Utamaro Festival and the Tochigi Float Festival are held in the city center.

WHERE CAN I GET MORE INFO?

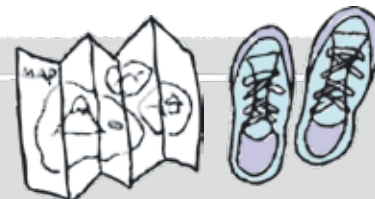
For more information online, check out the following websites

Official Tourist Information
www.tochigi-kankou.or.jp 

Tochigi local information
www.nearbytokyo.com/tochigi-city 

Book an activity in Tochigi city
www.nearbytokyo.com/edo-tochigi 

When in Tochigi city, drop by the
tourist office. (Tel +81-282-25-2356
Add: 14-1 Yamato-cho, Tochigi-shi)





Two Days In Tochigi

Tochigi city is a historic, picturesque town between Tokyo and Nikko (World Heritage Site) where Edo period activities can be enjoyed.

Visit the Information Desk

On arriving, head over to the tourist office's information desk (12 min walk from Tochigi Sta). Ask for recommendations about local events and exhibitions



Find on Google map



Rent a Kimono

The best way to enjoy the traditional side of Tochigi is in a Kimono. Rent a Kimono for the day and explore around town!
Price: 3,300 yen / day



Find here



Take a Boat Ride

In the Edo period, the Uzuma river served as a prosperous trade route connecting Tochigi city to Edo (Tokyo). Visit Kuranomachi Yuransen (蔵の街遊覧船), and take a boat ride with a local boatman who will sing songs. No reservation is required.
Price: 700 yen



TAKE A BOAT RIDE



Official Website



Discover a Lovely Cafe

Enjoy a coffee break in one of Tochigi's many artisan coffee shops, each with character and uniqueness.



Find here

Walk Around Town

The best way to see Tochigi is on foot. Walk around and visit Yokoyama Kyodokan (横山郷土館), Abuden Miso (油伝味噌), Okada Kinenkan (岡田記念館), and more.



1:15 PM



Find here



6:00PM



Find here

Stay the Night

Find many options from budget hotels & guesthouses to business hotels and even an onsen ryokan surrounded by mountains.
Price: 3,700 yen to 18,500 yen pp



Make Wagashi

Yamamoto Sohonten (山本総本店), a Wagashi shop founded in 1892, offers Wagashi making classes for visitors. The wagashi craftsmen will teach you how to create beautiful Wagashi using traditional tools. Book in advance.



Find here



10:00AM

Making Matcha Green Tea & Teacake

Come and experience Japanese culture firsthand by learning how to make matcha and traditional Edo style teacake. Classes are 40 min. Book in advance.
Price 2,740 yen



Book here



1:30PM



Rent a Bicycle

Explore Tochigi further by bicycle and ride to Iwashita New Ginger Museum (岩下の新生姜ミュージアム) or venture into the countryside.
Price: 400 yen



Find here



Make Your Own Traditional Incense

Japanese incense is made from natural ingredients such as aromatic woods. Visit RAN-TO-TSUKI (蘭と月) to blend your original fragrance to take home. Great for souvenirs! Book in advance.



Find here



4:15PM